

2-8ve Melodic Minor Scales & Minor Arpeggios

G Minor

Two staves of music for G Minor. The first staff shows the ascending scale in 4/4 time with fingerings: 0, 4, 4, 4, 4, 4, 4, 4. The second staff shows the descending scale in 4/4 time with fingerings: 4, 4, 4, 4, 4, 4, 4, 4, followed by a 3/4 time signature change and an arpeggio with fingerings: 0, 2, 0, 3, 1, 3, 2.

A \flat Minor

Two staves of music for A-flat Minor. The first staff shows the ascending scale in 4/4 time with fingerings: 1, 4, 4, 4, 4, 4, 4, 4. The second staff shows the descending scale in 4/4 time with fingerings: 4, 4, 4, 4, 4, 4, 4, 4, followed by a 3/4 time signature change and an arpeggio with fingerings: 1, 3, 1, 4, 2, 4, 3.

A Minor

Two staves of music for A Minor. The first staff shows the ascending scale in 4/4 time with fingerings: 1, 4, 4, 4, 4, 4, 4, 4. The second staff shows the descending scale in 4/4 time with fingerings: 4, 4, 4, 4, 4, 4, 4, 4, followed by a 3/4 time signature change and an arpeggio with fingerings: 1, 3, 1, 0, 2, 0, 3.

B \flat Minor

Two staves of music for B-flat Minor. The first staff shows the ascending scale in 4/4 time with fingerings: 1, 4, 4, 4, 4, 4, 4, 4. The second staff shows the descending scale in 4/4 time with fingerings: 4, 4, 4, 4, 4, 4, 4, 4, followed by a 3/4 time signature change and an arpeggio with fingerings: 1, 3, 1, 4.

Scroll to next page

2 B Minor



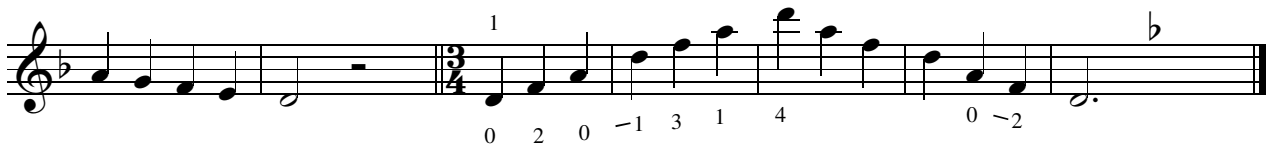
C Minor



C# Minor
(Enharmonic Db Minor)



D Minor



III = D-string
IV = G-string

Scroll to next page

E♭ Minor

IV¹
III¹

E Minor

IV¹
III¹

b

F Minor

IV¹
III¹

F# Minor

(Enharmonic G♭ Minor)

IV¹
III¹

III = D-string
IV = G-string